



**ALASKA DIVISION OF HOMELAND
SECURITY & EMERGENCY
MANAGEMENT**



**Daily Situation Report
26-119 • April 29, 2026**

Toll-Free 1.800.478.2337

Anchorage Area 907.428.7000

SEOC 907.428.7100

<p><u>SEOC Preparedness Level</u> Level 1-Routine Operations</p>	<p align="center">http://ready.alaska.gov</p>	<p><u>Alaska Military Installation Force Protection Level:</u> FPCON Bravo</p>
<p align="center"><u>NTAS Bulletin</u> There are no current advisories</p> <p>https://www.dhs.gov/national-terrorism-advisory-system</p>	<p align="center"><u>Maritime Security (MARSEC)</u> Level:1 Minimum Appropriate Security Measures</p>	<p align="center">River Watch</p> <p align="center">Wildland Fires</p>

(Significant changes from previous situation reports are red.)

Significant Issues:

River Watch and Wildland now on this report.

2026 River Watch Operations:

SECO along with the NWS and River Forecast Center, participated in the second community call for the Yukon region yesterday.

2026 Wildland Fires:

All active fires are contained.

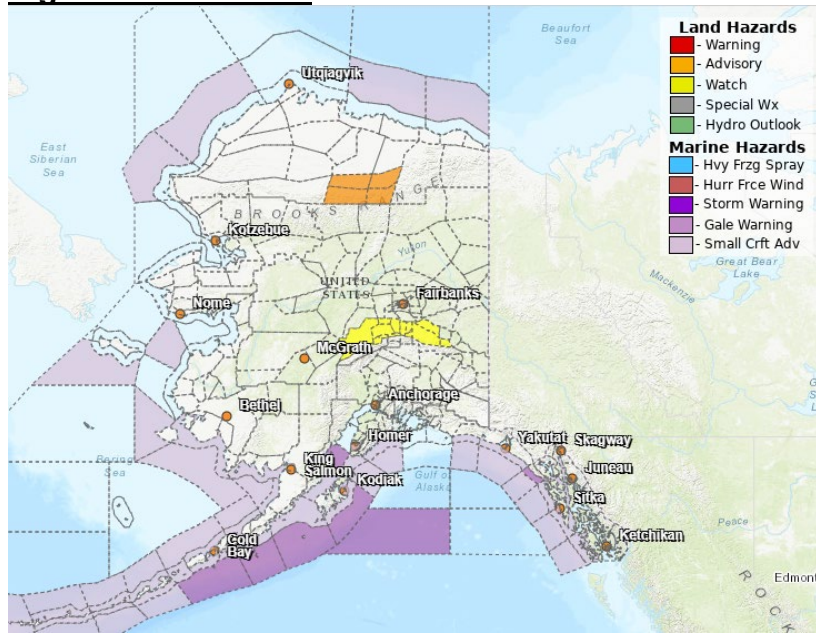
Earthquakes:

United States Geological Service (USGS) Earthquake Information: [Earthquake Hazards Program | U.S. Geological Survey](#) - National Tsunami Warning Center: <https://tsunami.gov/>

Alaska Volcanoes:

Great Sitkin: Alert Level: Watch and Aviation Color Code: Orange
Shishaldin: Alert Level: Advisory and Aviation Color Code: Yellow
For Alaska Volcano updates, go to: <https://www.avo.alaska.edu/>

Significant Weather:



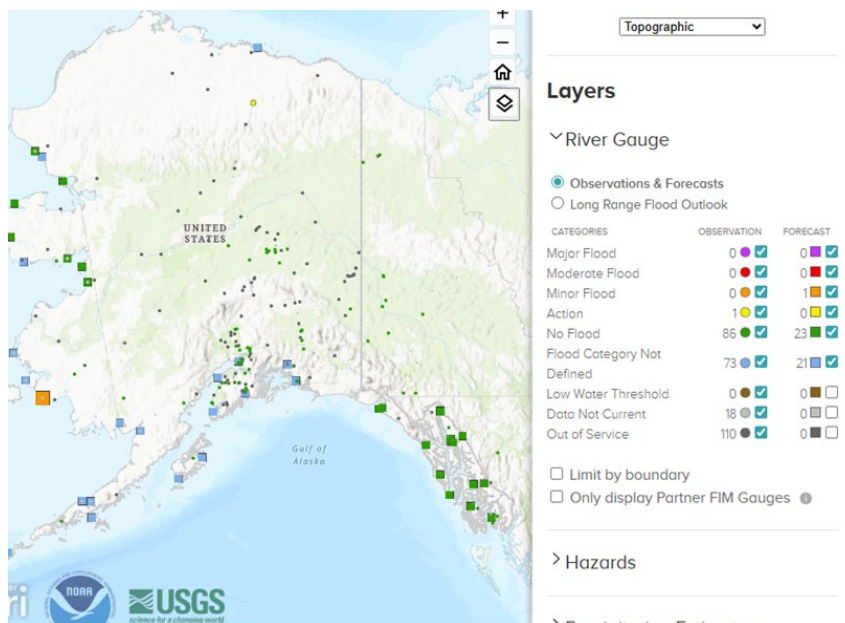
ADVISORIES:

Winter Weather Advisory: Central Brooks Range from 10 AM Thursday.

Wind Advisory: Delta Junction, Northern Denali Borough, and the Eastern Alaska Range north of Trims Camp remains in effect until Saturday morning

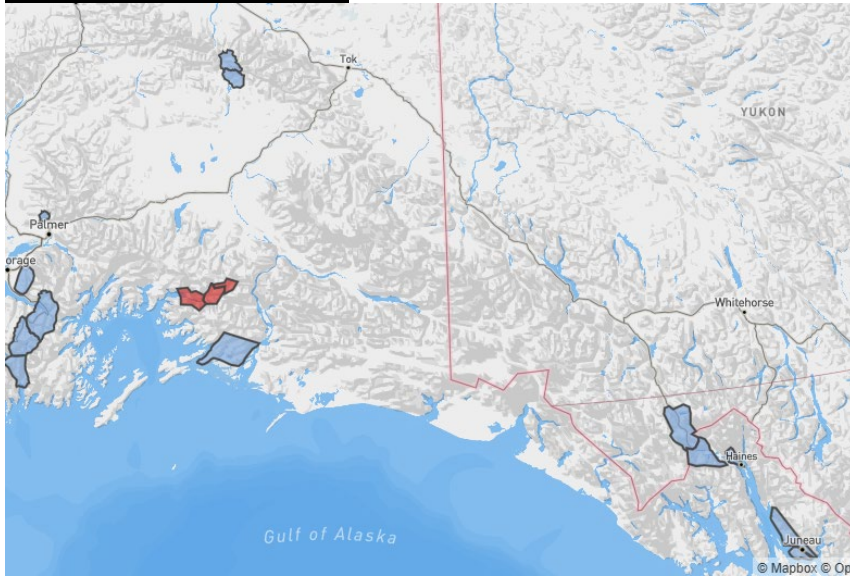
For more information, go to <https://www.weather.gov/arh/>

RIVER WATCH BREAKUP



For more information, go to <https://www.weather.gov/arh/>

Avalanche Conditions:



Hatcher Pass – No Information available.

Chugach State Park – Considerable above 1000' Moderate below 1000'.

Turnagain Pass and Girdwood – Considerable at all levels.

Summit Lake – Moderate at all levels.

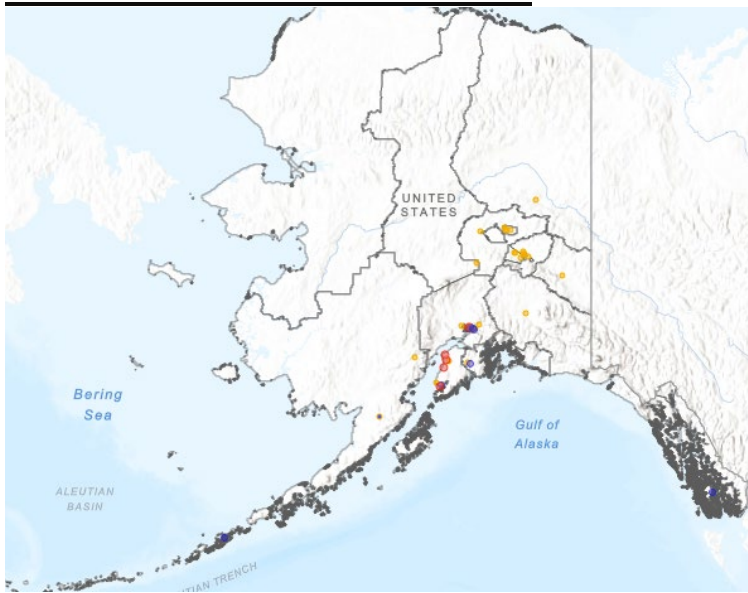
Seward and Lost Lake – Considerable at all levels.

Valdez: Maritime, Intermountain, Continental – Considerable from below 1500ft to 3000ft, HIGH above 3000ft

Douglas Island – Moderate at Upper Elevations. Low at middle and lower elevations.

For more information and the most current avalanche conditions, go to <https://alaskasnow.org>

Alaska Wildland 2025 Fire Season:



The Alaska Interagency Coordination Center is at Preparedness Level: 1

Total Fires YTD: 13

Total Acres: 18.7

There are currently 5 active fire(s) with 0 new and 0 fires staffed.

For more information, go to <https://fire.ak.blm.gov/> or <https://akfireinfo.com/>

Division of Homeland Security and Emergency Management Public Information:

For current press releases, see: <https://ready.alaska.gov/PublicInformation/PressReleases>

Department of Health (DOH):

For current information, see: <https://health.alaska.gov/en/>

Travel Alerts and Conditions:

For current driving conditions, dial 511 or visit: <https://511.alaska.gov/>

Barry Arm Landslide / Tsunami Risk:

For the latest information on the Barry Arm Landslide and Tsunami risk, click here:
<https://dqgs.alaska.gov/hazards/barry-arm-landslide.html>

Alaska Cyber Security Information:

State Employees may sign up for cybersecurity notifications and alerts at:
<https://oit-int.alaska.gov/security/>

Air Quality Index (AQI) Advisories:

For the most up-to-date Air Quality Index Advisories:
<https://dec.alaska.gov/Applications/Air/airtoolsweb/Advisories>

Spills of Oil and Hazardous Substances:

The Alaska Division of Environmental Conservation (ADEC) Spill Prevention and Response page is located at: <https://dec.alaska.gov/spar/ppr/spill-information/response/>

The Next Situation Report will be on **April 30, 2026**. A significant change in situation or threat level will prompt an interim report. This report is posted on the internet at <https://ready.alaska.gov/sitrep>.

To register for email distribution, go to: <http://list.state.ak.us/mailman/listinfo/dhsem.situation.report>.
Direct questions regarding this report to the SEOC at 907-428-7100 or seoc@alaska.gov